



Included components
Componenti inclusi



120° Diffuse light



20.000 Hours

IK08

Certificate of resistance

IRC 80



PACKING 	INNER pcs	MASTER pcs
Colour Box	12	12



TECHNICAL DATA

Power supply	220V AC
Power supply provided	YES
Type of power supply provided	INTERNAL DRIVER
Lighting source	2835 SMD LED
Lighting power (W)	21
Electricity consumption (W)	21
Lumen	2730
IRC	>80
Light beam	DIFFUSE
Beam angle (°)	120°
LED lifespan (hours)	20.000
Material	PLASTIC - PC
Maximum connections	Max 21 pcs
Switch	NO
IP Protection	IP65
Insulation class	I
Energy class	E
Light colour	4000K
Dimmability	NOT DIMMABLE
Lamp included	(INCLUDED)
Mechanical strength (IK)	IK08
Energy Label	https://www.velamp.com/energylabels2021/ECOPOWER218.jpg
Code eprel	1216309
Link db eprel	http://eprel.ec.europa.eu/qr/1216309
Warranty	2 YEARS
Width (mm)	590
Depth (mm)	72
Height (mm)	61
Net weight (Kg)	0.608
Eprel card	https://eprel.ec.europa.eu/fiches/lightsources/Fiche_1216309_EN.pdf

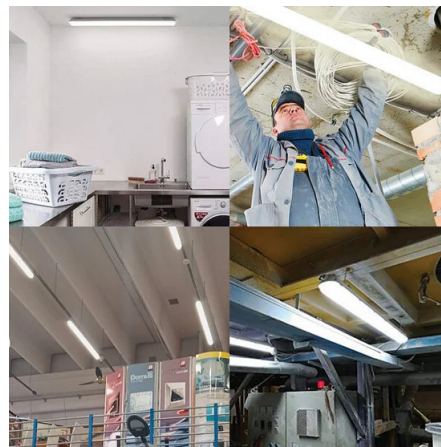
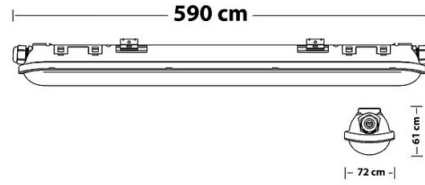
DESCRIPTION

Waterproof IP65 ceiling light with integrated LEDs. It uses the latest generation 2835 SMD LEDs: they guarantee constant light and perfect heat dissipation within the ceiling light. Polycarbonate body and diffuser: IK08 certified, it's virtually unbreakable. Furthermore, polycarbonate is highly UV-resistant, ensuring the diffuser won't yellow. Driver and ceiling mounting kit included. Light temperature: 4000K; CRI: 80; Beam angle: 120 degrees; LED lifespan: 30,000 hours. Excellent for humid environments such as garages, cellars, laundry rooms; suitable for outdoor locations exposed to direct jets of water and the penetration of fine dust. Equipped with input and output cable gland for series mounting; resistant (IK08) and TUV certified.

LOGISTICS DATA

Packing type	Colour Box
Pack length (mm)	77
Pack width (mm)	600
Pack height (mm)	61
Packed product weight (kg)	8.400
Inner width (cm)	25
Quantity in inner	12
ITF INNER	18003910104430
Master length (cm)	64
Master width (cm)	25
Master height (cm)	28
Quantity in master	12
Master gross weight (kg)	8.400
How many pieces on 80x120 pallet (pz)	300
INTRASTAT Code	94051140
DEEE	0.58
ECOLOGIC SCALES 2025	MLUMI030000
Country of origin	CHINA

DIMENSIONS:



**MONTAGGIO SERIALE
SERIAL CONNECTION**

