

157,5  
cm

FOR  
1x150CM  
LED TUBE



PACKING 	INNER pcs	MASTER pcs
Colour Box	12	12



## TECHNICAL DATA

Power supply	220V AC
Power supply provided	NO
LED quantity	1 x
Lighting source	T8 LED TUBE
Light beam	DIFFUSE
Lamp included	(NOT INCLUDED)
Bulb shape	T8
Attachment	G13 LAMP
Beam angle (°)	120°
IP Protection	IP65
Insulation class	II
Country of origin	CHINA
Material	ABS + PC
Accessories included	Installation Kit NEPF
Warranty	2 YEARS
Width (mm)	1580
Depth (mm)	60
Height (mm)	62
Net weight (Kg)	0.830

## DESCRIPTION

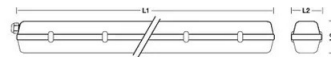
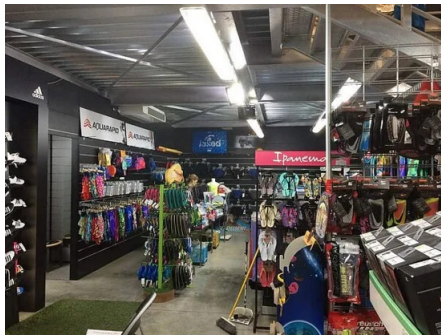
Waterproof ceiling light for use with 1 150 cm T8 LED tube. Suitable for one 150cm LED tube (not supplied); G13 fitting. ABS tub, PC diffuser, ABS clips. Waterproof: IP65; G13 socket; max. tube power: 22W. The LED tube can be inserted from either side.

## LOGISTICS DATA

Packing type	Colour Box
Pack length (mm)	64
Pack width (mm)	1590
Pack height (mm)	66
Packed product weight (kg)	0.900
Inner width (cm)	21
Quantity in inner	12
ITF INNER	18003910101583
Master length (cm)	161
Master width (cm)	21
Master height (cm)	30

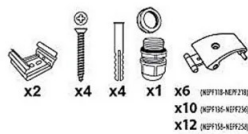
## LOGISTICS DATA

Quantity in master	12
Master gross weight (kg)	11.700
How many pieces on 80x120 pallet (pz)	180
INTRASTAT Code	94051140
DEEE	0.58
ECOLOGIC SCALES 2025	MLUMI030000
Country of origin	CHINA



Codice Prod. Item code Code Codigo Code	Lunghezza L1 Length Longueur Lungitud Länge	Larghezza L2 Width Largeur Ancho Brette	Altezza L3 Height Hauteur Altura Höhe
NEPF118	665 mm	60 mm	62 mm
NEPF218	665 mm	110 mm	62 mm
NEPF136	1275 mm	60 mm	62 mm
NEPF236	1275 mm	110 mm	62 mm
NEPF158	1575 mm	60 mm	62 mm
NEPF258	1575 mm	110 mm	62 mm

Accessori inclusi / Accessories included / Accessoires fournis / Accesorios incluidos / Mitgeliefertes Zubehör:



Kit di installazione  
Installation kit