



PACKING 	INNER pcs	MASTER pcs
Colour Box	8	8



TECHNICAL DATA

Power supply	220V AC
Power supply provided	NO
LED quantity	2 x
Lighting source	T8 LED TUBES
Light beam	DIFFUSE
Lamp included	(NOT INCLUDED)
Bulb shape	T8
Attachment	G13 LAMP
Beam angle (°)	120°
IP Protection	IP65
Insulation class	II
Country of origin	CHINA
Material	ABS + PC
Accessories included	Installation Kit NEPF
Warranty	2 YEARS
Width (mm)	665
Depth (mm)	110
Height (mm)	62
Net weight (Kg)	0.540

DESCRIPTION

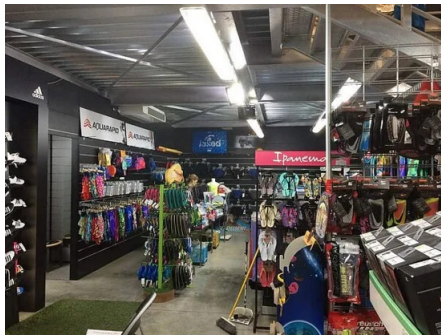
Waterproof ceiling light for use with 2 60 cm T8 LED tubes. Ideal for 2 x 60cm LED tubes (not supplied); G13 fitting. ABS tub, PC diffuser, ABS clips. Waterproof: IP65; G13 socket; max. tube power: 9W. The LED tube can be inserted from either side.

LOGISTICS DATA

Packing type	Colour Box
Pack length (mm)	114
Pack width (mm)	680
Pack height (mm)	66
Packed product weight (kg)	0.620
Inner width (cm)	28
Quantity in inner	8
ITF INNER	18003910101552
Master length (cm)	70
Master width (cm)	28
Master height (cm)	25

LOGISTICS DATA

Quantity in master	8
Master gross weight (kg)	5.600
How many pieces on 80x120 pallet (pz)	200
INTRASTAT Code	94051140
DEEE	0.58
ECOLOGIC SCALES 2025	MLUMI030000
Country of origin	CHINA



Accessori inclusi / Accessories included / Accessoires fournis / Accesorios incluidos / Mitgeliefertes Zubehör:



x2
x4
x4
x1
x6 (NPEF118-NEPF178)
x10 (NPEF118-NEPF138)
x12 (NPEF118-NEPF218)

Kit di installazione
Installation kit