



PACKING 	INNER pcs	MASTER pcs
Colour Box	8	8



## TECHNICAL DATA

Power supply	220V AC
Power supply provided	NO
LED quantity	2 x
Lighting source	T8 LED TUBES
Light beam	DIFFUSE
Lamp included	(NOT INCLUDED)
Bulb shape	T8
Attachment	G13 LAMP
Beam angle (°)	120°
IP Protection	IP65
Insulation class	II
Country of origin	CHINA
Material	ABS + PC
Accessories included	Installation Kit NEPF
Warranty	2 YEARS
Width (mm)	1580
Depth (mm)	110
Height (mm)	62
Net weight (Kg)	1.180

## DESCRIPTION

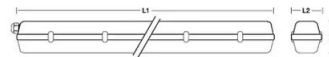
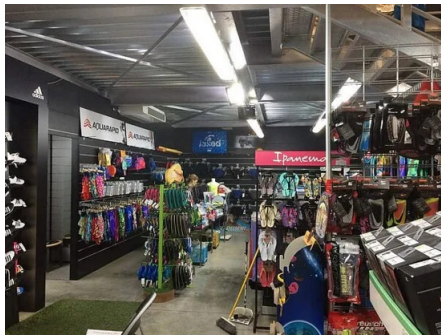
Waterproof ceiling light for use with 2 150 cm T8 LED tubes. Ideal for 2 x 150cm LED tubes (not supplied); G13 fitting. ABS tub, PC diffuser, ABS clips. Waterproof: IP65; G13 socket; max. tube power: 22W. The LED tube can be inserted from either side.

## LOGISTICS DATA

Packing type	Colour Box
Pack length (mm)	114
Pack width (mm)	1590
Pack height (mm)	66
Packed product weight (kg)	1.210
Inner width (cm)	28
Quantity in inner	8
ITF INNER	18003910101590
Master length (cm)	161
Master width (cm)	28
Master height (cm)	25

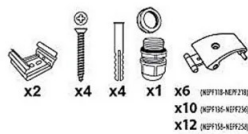
## LOGISTICS DATA

Quantity in master	8
Master gross weight (kg)	10.800
How many pieces on 80x120 pallet (pz)	120
INTRASTAT Code	94051140
DEEE	0.58
ECOLOGIC SCALES 2025	MLUMI030000
Country of origin	CHINA



Codice Prod. Item code Code Codigo Code	Lunghezza L1 Length Longueur Lungitud Länge	Larghezza L2 Width Largeur Ancho Brette	Altezza L3 Height Hauteur Altura Höhe
NEPF118	665 mm	60 mm	62 mm
NEPF218	665 mm	110 mm	62 mm
NEPF136	1275 mm	60 mm	62 mm
NEPF236	1275 mm	110 mm	62 mm
NEPF158	1575 mm	60 mm	62 mm
NEPF258	1575 mm	110 mm	62 mm

Accessori inclusi / Accessories included / Accessoires fournis / Accesorios incluidos / Mitgeliefertes Zubehör:



Kit di installazione  
Installation kit